

- Works of Evangelism
- Establishing Churches
- Equipping Nationals

August 2025



JEFF DAVIS
Director, EMU International

KNIT TOGETHER IN LOVE

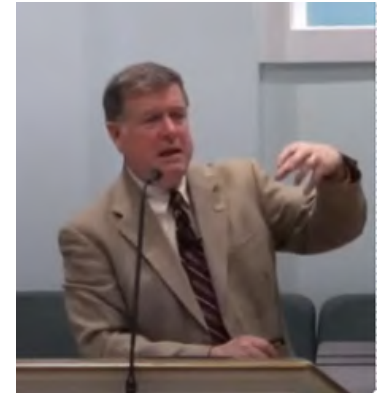
Greetings from Greenville, South Carolina, where the summer heat has settled in with unusual intensity. While we're accustomed to July temperatures around 89°F, recent highs have pushed past 95°F, bringing heat indexes north of 105°F. Whether you're enduring similar warmth or enjoying a cooler corner of creation, we pray you're finding ways to stay refreshed both physically and spiritually. For us, your prayers and financial support continue to be an incredible source of encouragement and refreshment. You are not just donors, you are co-laborers in every story of victory, every gospel seed sown, and every soul disciplined. We thank God for you.

This past month brought a gift: time near home and opportunities to connect with several pastors and ministry leaders, sharing meals, ministry vision, and mutual encouragement. These gatherings reminded me of the beauty of partnership, not just in financial terms, but in the way that hearts are knit together for gospel advance, as Colossians says, *"that their hearts might be comforted, being knit together in love."* There is something deeply meaningful about sitting across from someone who is running the same race, knowing we're each part of the same story the gospel continues to write.

One highlight of this past month was traveling with my wife Joanna, to Hanahan, SC, where I had the privilege of preaching at **Foster Creek Baptist Church**. Their legacy of EMU support, especially during the leadership of George Jensen, made our time with them especially meaningful.



Good Soil Training at BJU



Preaching at Foster Creek

It was also a blessing to welcome **Billy and Saritha Judson** back to Greenville before their return to India. We joined **Cedric Wong** at **Bob Jones University** for the **Good Soil Evangelism and Discipleship Training**, where several ministries intersected with a shared passion for cross-cultural equipping.

In a last-minute but Spirit-prompted decision, I flew to **Lima, Perú** on July 15-21, to assist **Tim Chapman** in packing his house and preparing for his move back to the USA. While there, I preached twice at **Gracia**, the church Tim founded and is now entrusting to national leadership. It was a powerful reminder that Christ's promise to build His church continues as one plants, another waters, and God gives the increase.

EMU International
209 Roberts Road
Taylors, SC 29687
(864) 268-9267
office@emuinternational.org

Jeff & Joanna Davis
119 Oak Wind Circle
Greer, SC 29651
(864) 617-7156
jeff@emuinternational.org
mrspastorjd@gmail.com



pastorjeffdavis.com



Even as I write, I'm preparing for a quick trip to **The Wilds Christian Camp**, where Cedric is assisting campers from Hong Kong. I'll also meet with **Rick Jensen** to discuss final plans for his upcoming work trip to **Uruguay**, where he and two other men from the USA will join workers from the MEU churches at **Campamento Emanuel**. We praise the Lord for already supplying funds for several of these projects: Water pump replacement – \$2,300, Air conditioning for the meeting room – \$7,350, Air conditioning for the cabins – \$9,200, Hazardous tree removal – \$1,900.

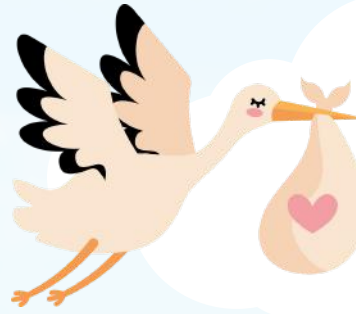
Funds are still needed for Aluminum partitions for bathrooms (cabins 1-4) – \$14,300, Lighting installation for the soccer field and access paths – \$10,300, and new septic field lines for the Casita and cabins 5 and 6 – \$34,562. Would you help us reach our goals?

Donate Online:
emuinternational.org/give-now/uruguay-camp-emmanuel

Your partnership fuels all of this. You're in every conversation, every sermon, every baptism, every brick laid, and every box packed. Thank you for investing with us, not just in projects, but in people and the enduring triumphs of the gospel.

We are here to serve you and your church in any way we can. We would love to pray for you and your specific needs. Feel free to reach out to me at jeff@emuinternational.org or (864) 617-7156. If you'd like me to share the ministry of EMU International with your church family, please let me know.

6 + 3 = 9 Grandchildren



Prayers appreciated as our son Caleb's wife Jamie is expecting a little girl in early August. Our daughter Hannah is due to have her first child in January and our daughter Bethany is expecting her third child in February.

Attention Pastors



I am currently planning my calendar for 2025 and 2026. In addition to traveling and visiting the EMU International missionaries on their various fields of service, I have had the privilege of preaching in Christian School chapels, Pastors' Fellowships, at Christian Camps, Missions Conferences, Revival Meetings, and Family Conferences. I am also available for single meetings to promote the work of EMU International. Contact me if you are interested in me visiting your church.



We NEED Partners



Name _____

Spouse _____

Address _____

City _____

State _____ Zip _____

Email _____ Phone _____

- ☐ Yes, I/We desire to partner with the Davis family
- ☐ I/We are committed to regularly pray for the Davis family
- ☐ As the Lord leads and enables, I/we desire to commit to support the Davis family as follows
- ☐ \$100/month ☐ \$75/month ☐ \$50/month ☐ \$25/month
- ☐ Other \$_____/month ☐ One Time Gift \$_____

Please make checks payable to EMU International and include Davis family on the memo line. Mail checks to EMU International, PO Box 790, Taylors, SC 29687